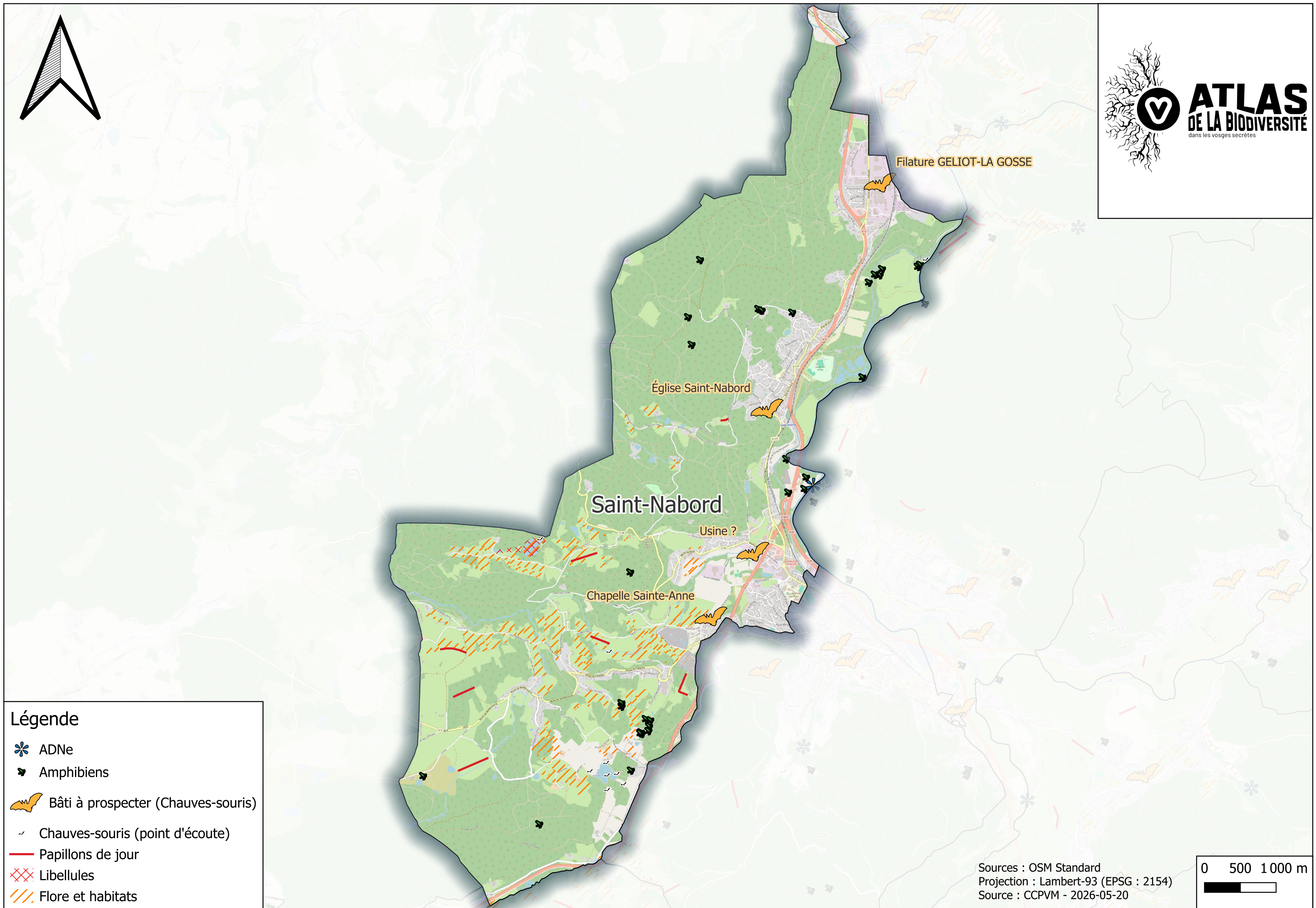


Sources : OSM Standard  
Projection : Lambert-93 (EPSG : 2154)  
Source : CCPVM - 2026-05-20

### Légende

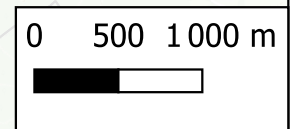
- ADNe
- Amphibiens
- Bâti à prospecter (Chauves-souris)
- Chauves-souris (point d'écoute)
- Papillons de jour
- Libellules
- Flore et habitats

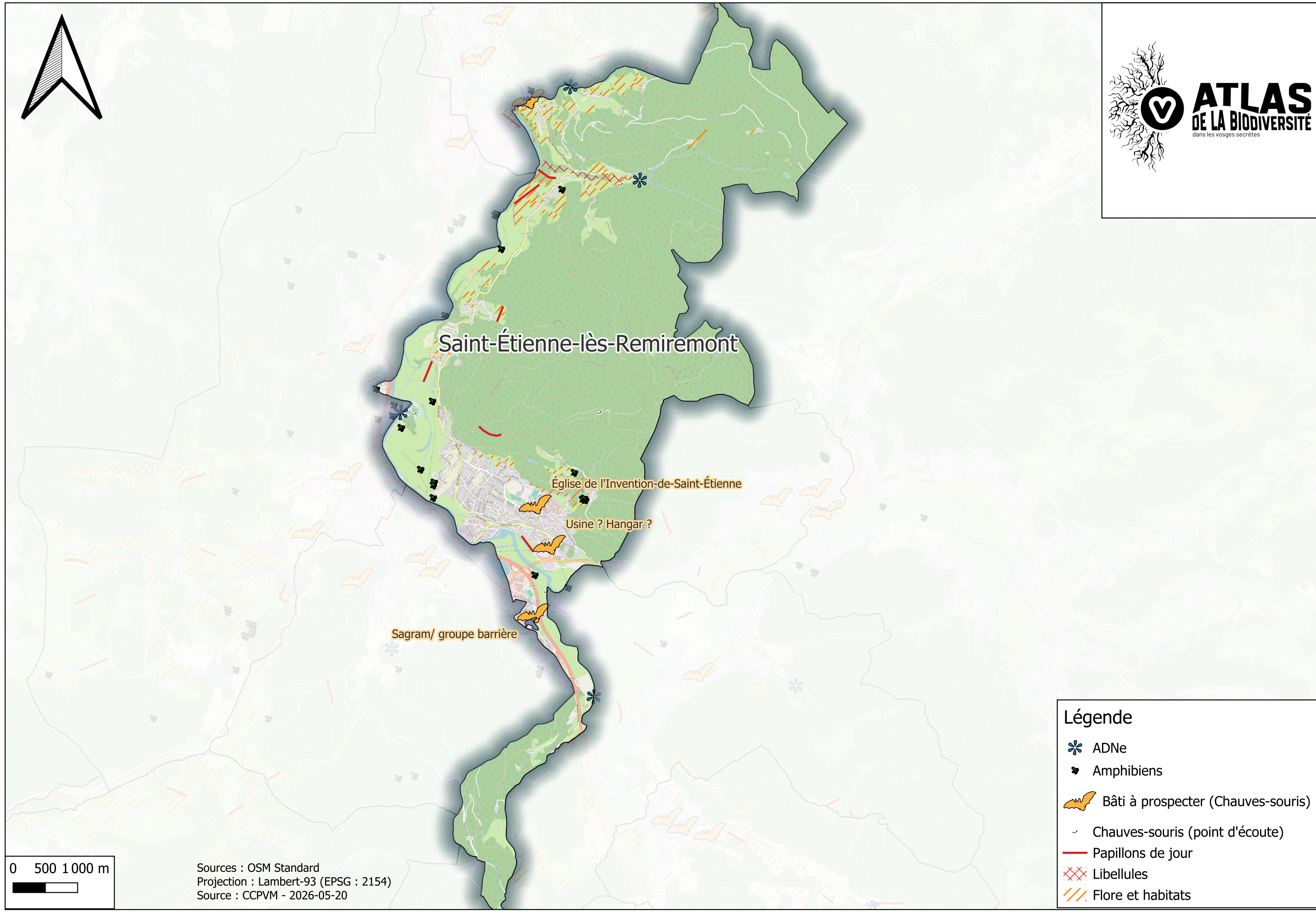


**Légende**

- ADNe
- Amphibiens
- Bâti à prospecter (Chauves-souris)
- Chauves-souris (point d'écoute)
- Papillons de jour
- Libellules
- Flore et habitats

Sources : OSM Standard  
Projection : Lambert-93 (EPSG : 2154)  
Source : CCPVM - 2026-05-20












Saint-Étienne-lès-Remiremont

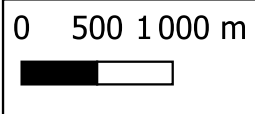
Église de l'Invention-de-Saint-Étienne

Usine ? Hangar ?

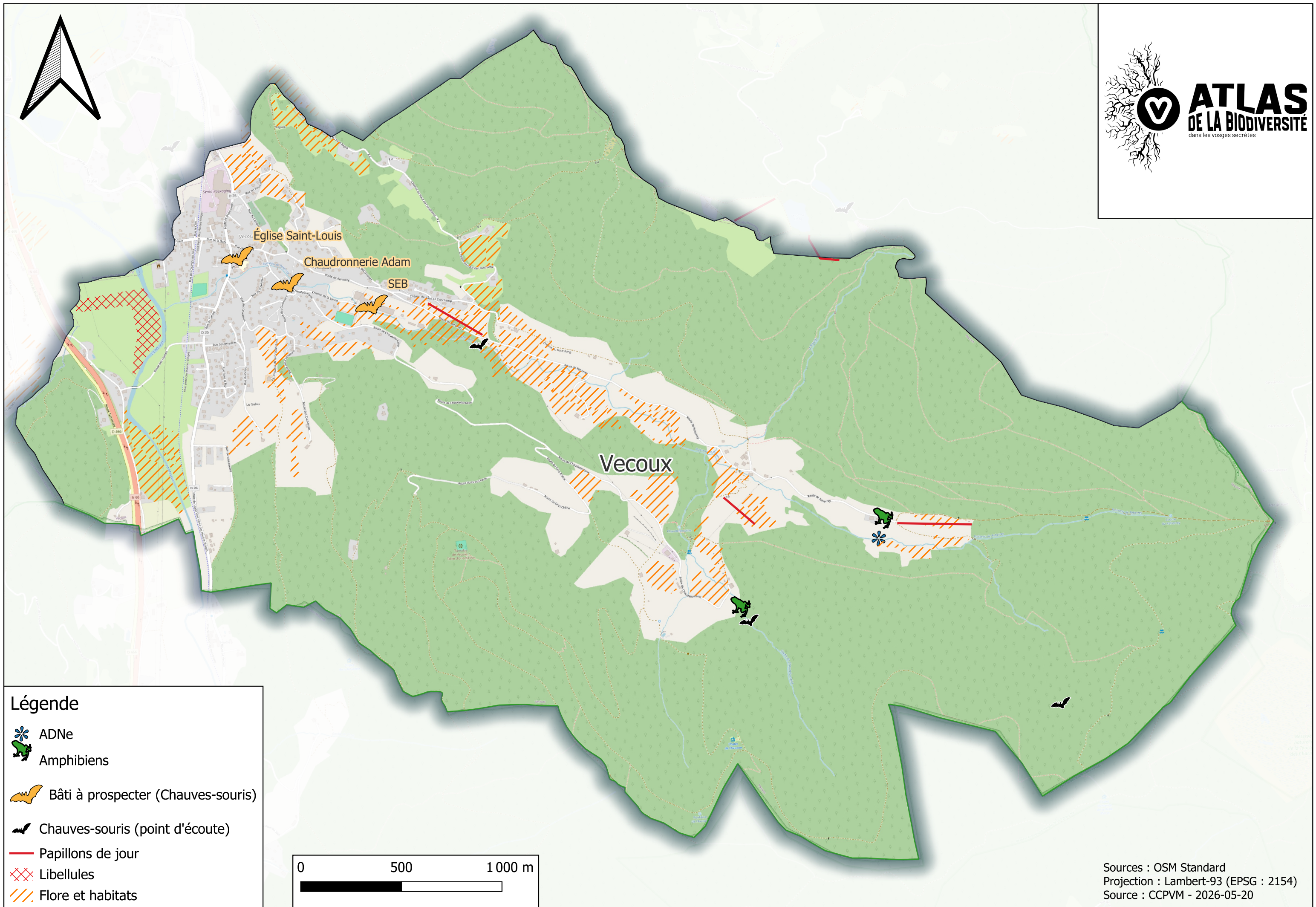
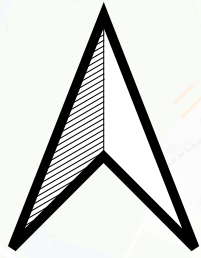
Sagram/ groupe barrière

**Légende**








-  ADNe
-  Amphibiens
-  Bâti à prospecter (Chauves-souris)
-  Chauves-souris (point d'écoute)
-  Papillons de jour
-  Libellules
-  Flore et habitats

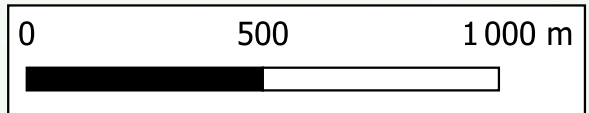


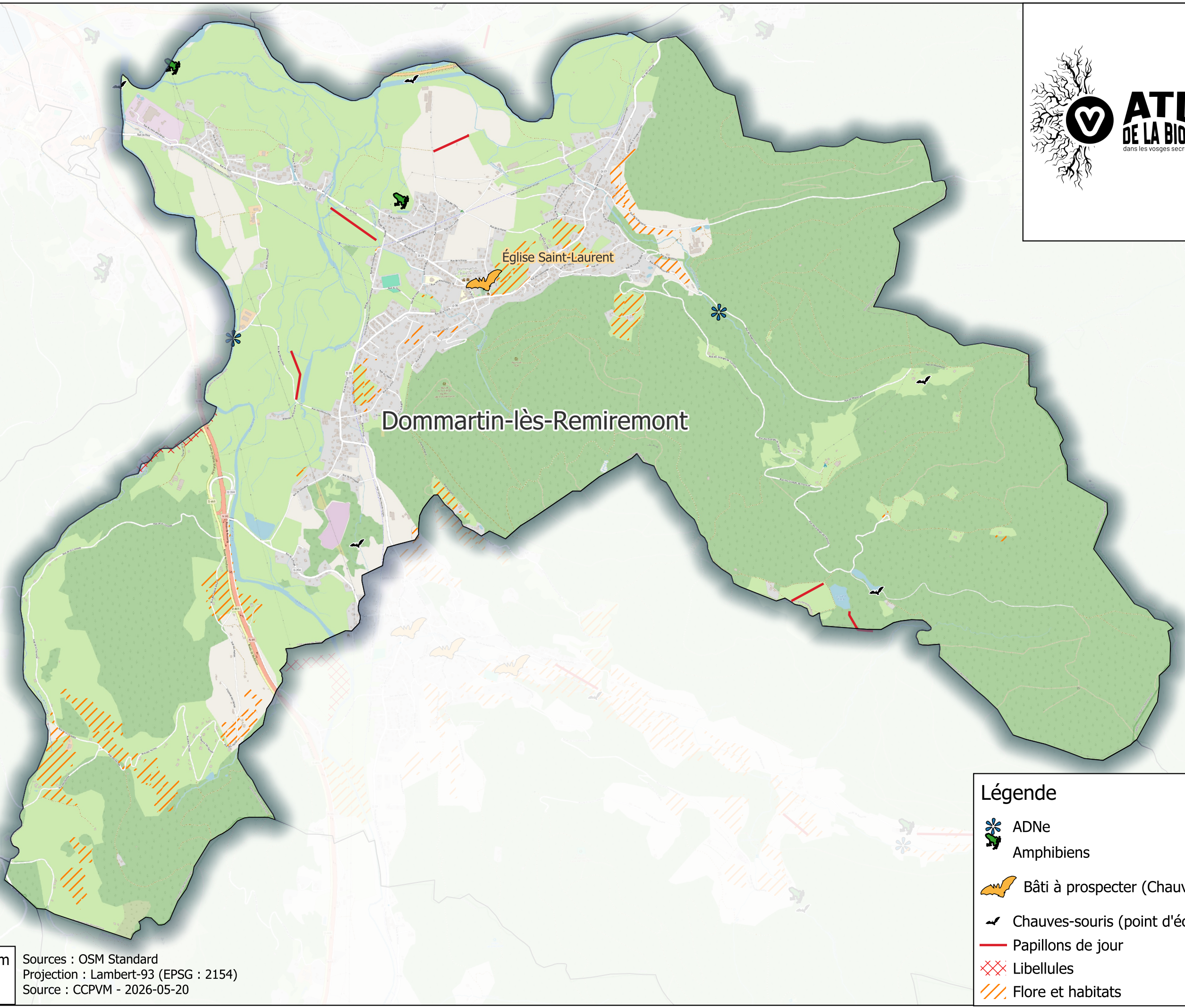
Sources : OSM Standard  
Projection : Lambert-93 (EPSG : 2154)  
Source : CCPVM - 2026-05-20



**Légende**

-  ADNe
-  Amphibiens
-  Bâti à prospecter (Chauves-souris)
-  Chauves-souris (point d'écoute)
-  Papillons de jour
-  Libellules
-  Flore et habitats










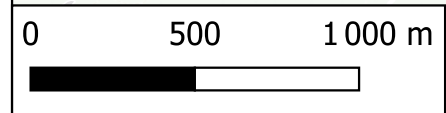


Dommartin-lès-Remiremont

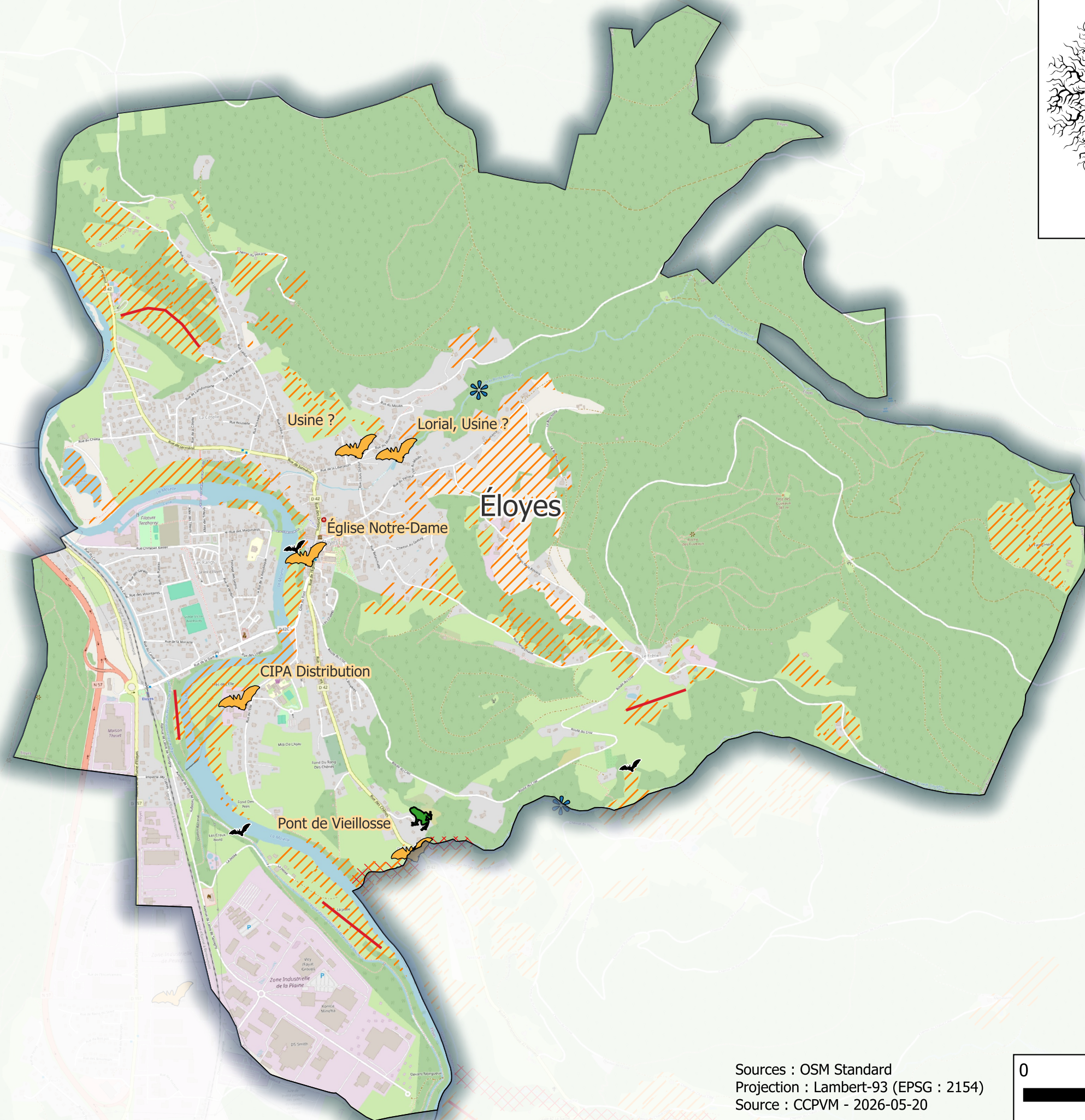
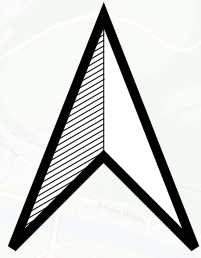
Église Saint-Laurent

**Légende**








-  ADNe
-  Amphibiens
-  Bâti à prospecter (Chauves-souris)
-  Chauves-souris (point d'écoute)
-  Papillons de jour
-  Libellules
-  Flore et habitats



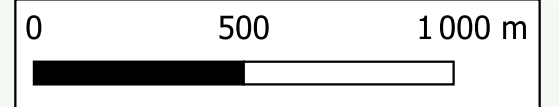
Sources : OSM Standard  
Projection : Lambert-93 (EPSG : 2154)  
Source : CCPVM - 2026-05-20

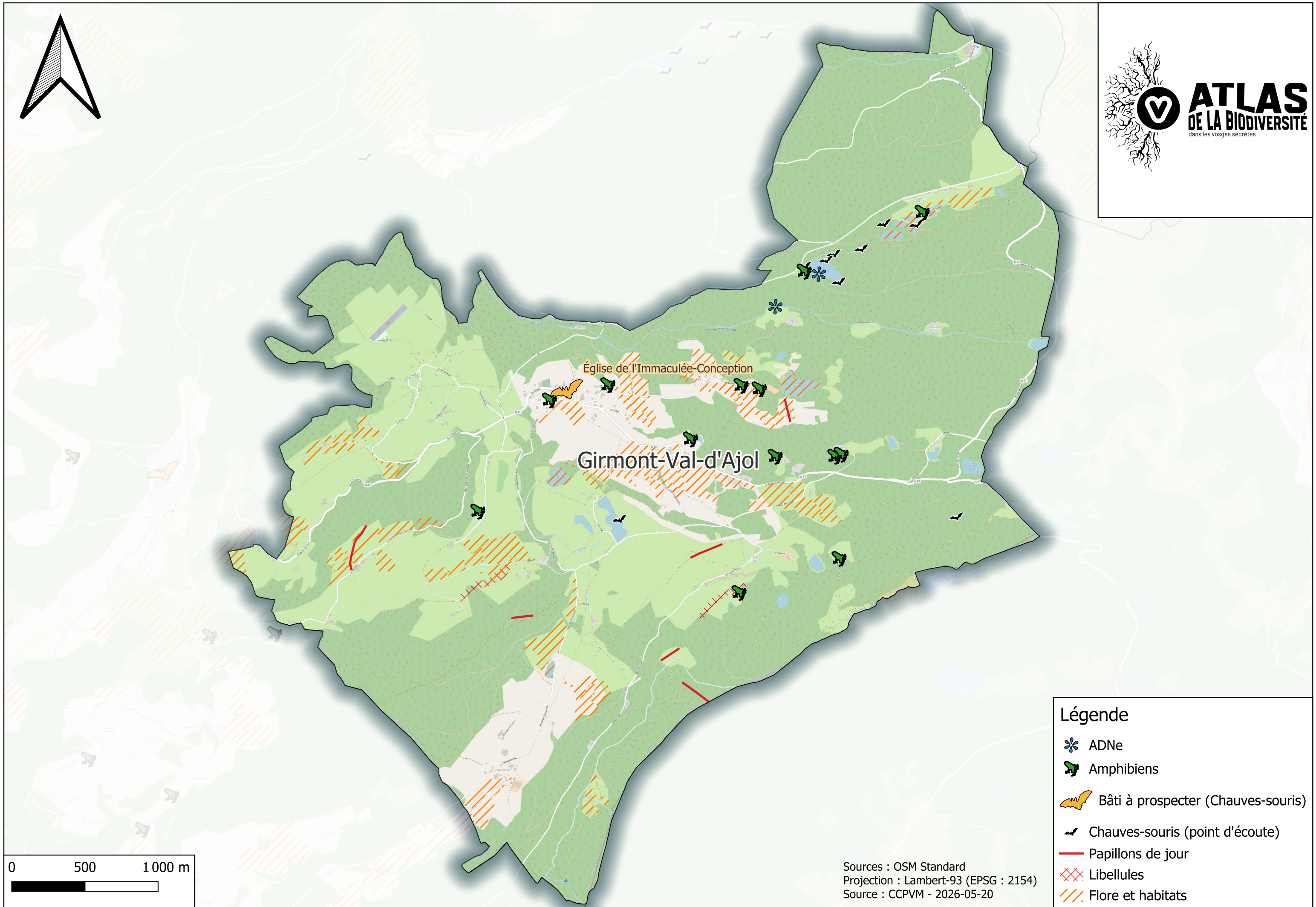


**Légende**

-  ADNe
-  Amphibiens
-  Bâti à prospecter (Chauves-souris)
-  Chauves-souris (point d'écoute)
-  Papillons de jour
-  Libellules
-  Flore et habitats

Sources : OSM Standard  
Projection : Lambert-93 (EPSG : 2154)  
Source : CCPVM - 2026-05-20



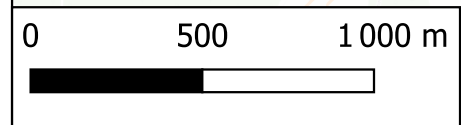


Girmont-Val-d'Ajol

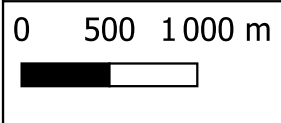
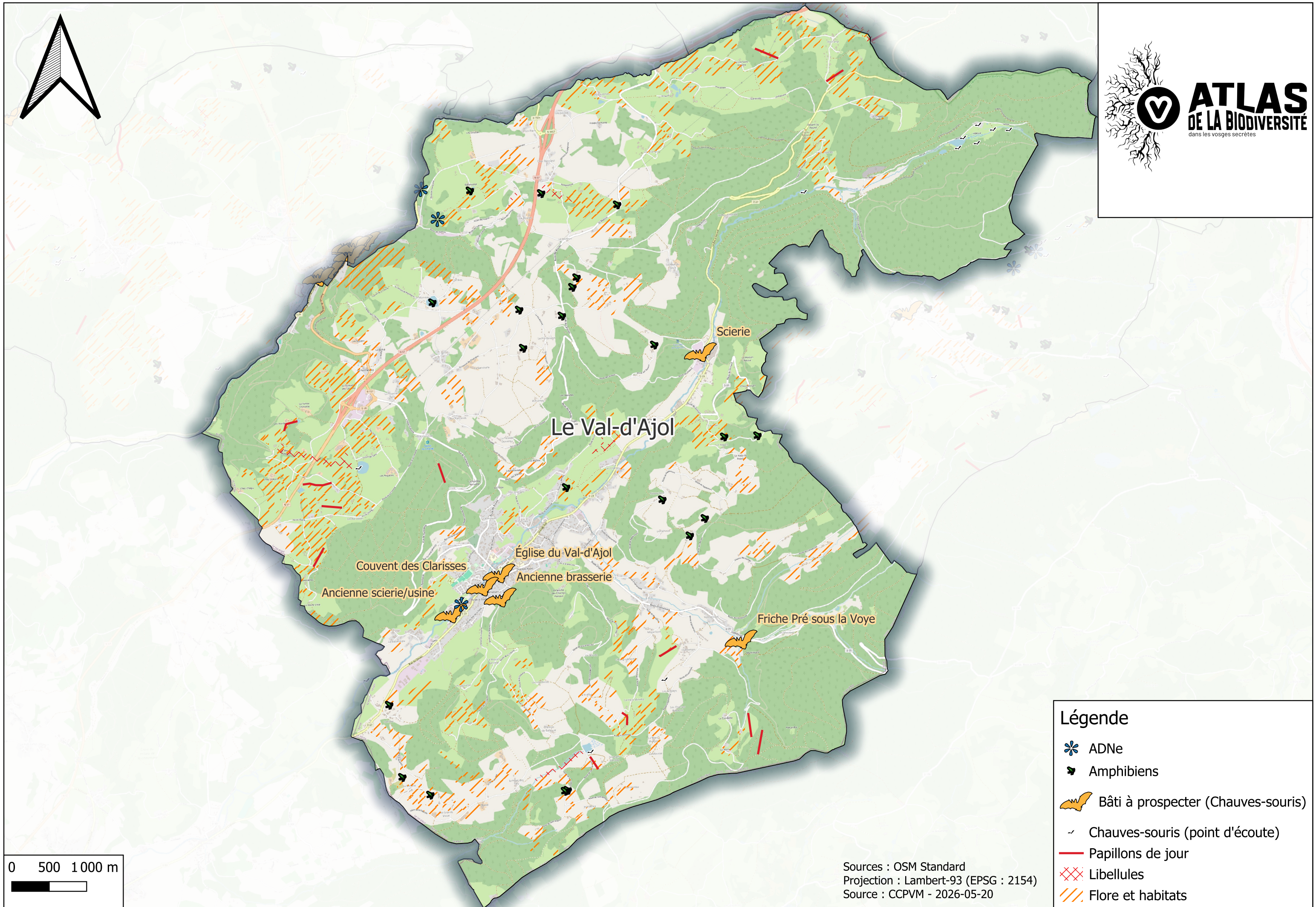
Église de l'Immaculée-Conception

**Légende**

- ADNe
- Amphibiens
- Bâti à prospecter (Chauves-souris)
- Chauves-souris (point d'écoute)
- Papillons de jour
- Libellules
- Flore et habitats



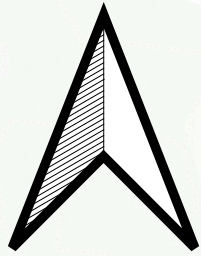
Sources : OSM Standard  
Projection : Lambert-93 (EPSG : 2154)  
Source : CCPVM - 2026-05-20



Sources : OSM Standard  
Projection : Lambert-93 (EPSG : 2154)  
Source : CCPVM - 2026-05-20

**Légende**

- ADNe
- Amphibiens
- Bâti à prospecter (Chauves-souris)
- Chauves-souris (point d'écoute)
- Papillons de jour
- Libellules
- Flore et habitats



Usine métallurgique Forge de Semouse

Plombières-les-Bains

Thermes Calodae

Thermes Calodae

Ancien hôtel / collège

Thermes Calodae

Ancienne gendarmerie

Thermes Napoléon

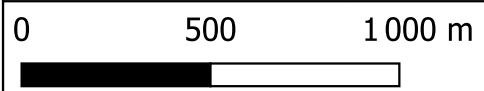
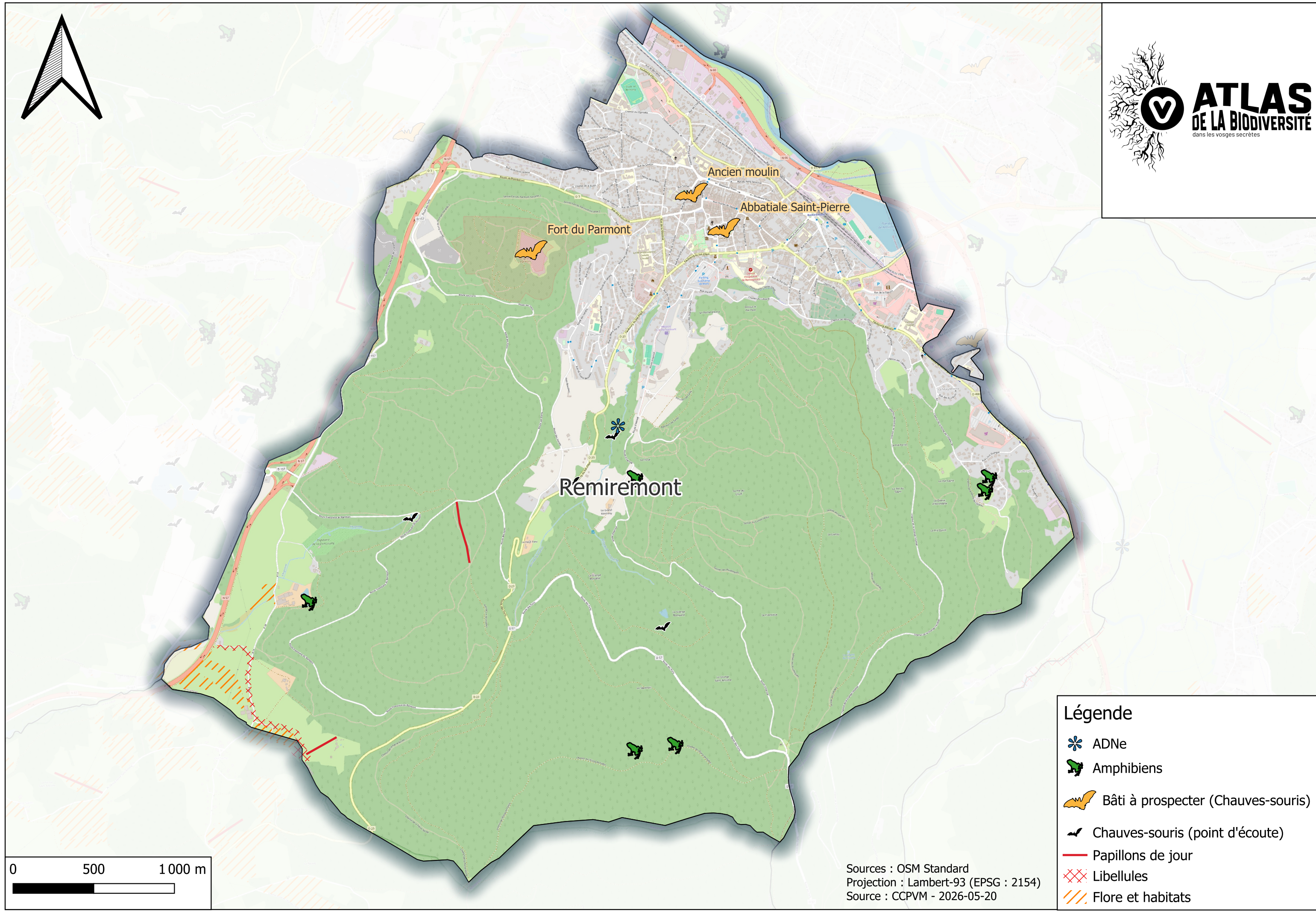
0 500 1 000 m



Sources : OSM Standard  
Projection : Lambert-93 (EPSG : 2154)  
Source : CCPVM - 2026-05-20

### Légende

- ADNe
- Amphibiens
- Bâti à prospecter (Chauves-souris)
- Chauves-souris (point d'écoute)
- Papillons de jour
- Libellules
- Flore et habitats



Sources : OSM Standard  
Projection : Lambert-93 (EPSG : 2154)  
Source : CCPVM - 2026-05-20

**Légende**

- ADNe
- Amphibiens
- Bâti à prospecter (Chauves-souris)
- Chauves-souris (point d'écoute)
- Papillons de jour
- Libellules
- Flore et habitats